

# Summary Product and List Price Guide

## Calendar Year 2008

### EWS, Inc.

# Environmental Water Systems



The Leader in  
Whole Water Water Filtration



Since 1987

## Award Winning Customer Service

ALL FILTRATION PRODUCT MADE  AND ASSEMBLED IN THE USA

Complete Product Summary Guide, List Pricing, and Shipping & Handling Schedule  
of All Filtration Items and Product

◆ Residential ◆ Commercial ◆ Municipal ◆ Well Water





## Index to Section 5

### POINT OF ENTRY (Whole Home) FILTRATION AND TREATMENT SYSTEMS

EWS Series - Environmental Water Systems	5-4
Whole Home Water Filtration and Conditioning Appliances	
CWL Series - Whole Home Water Filtration Appliances	5-5

### POINT OF USE (Sink) FILTRATION SYSTEMS

Drinking Water Filtration Systems	
Two Stage Undercounter Drinking Water Systems	5-6
Three Stage Undercounter Drinking Water Systems	5-7
In-Line, Point of Use Filtration Units	5-7
Reverse Osmosis Systems	
Three Stage Common Municipal Water Application	5-8
Four Stage Common Well Water Application	5-9
Five Stage Difficult Well Water Application	5-9
Accessories	
Pressure Limiting Valve	5-6 or 8
Dispenser Options for Special Finishes	5-6 or 8

### SOFTENING, WELL WATER FILTRATION, AND OTHER TREATMENT OPTIONS

Softeners	5-10
High Oxidation Media Units - Removal of Iron, Manganese & Hydrogen Sulfide	5-11
Pre-Sediment, Point of Entry	5-12
pH Balancing - Increasing Reagent Units or Decreasing Exchange Units	5-13

### COMMERCIAL FILTRATION AND TREATMENT SYSTEMS

Commercial/Large Residential Tank Filtration Series	5-14
Softener Series, custom specified to meet application	
Commercial Reverse Osmosis Systems	5-15

### REPLACEMENT FILTERS, MEMBRANES, UV AND MEDIA KITS

Point of Use (sink) Replacements of Filter Cartridges, Membranes, UV Lamp	5-16
Media Kit Replacements of All Point of Entry Units	5-17
Exhibit: Shipping & Handling Schedule for Current Shipping/Freight Costs	5-18
Rear Cover and Contact Information	5-20





# How To Select The Right Product For Your Home.

Please check the appropriate box.

## WHAT IS THE SOURCE OF YOUR WATER?

**MUNICIPALLY TREATED**  
(City, tap, or from a utility.)

Are you on municipally-treated water? If so, information is readily available for you to make an informed decision to complement that water, in order to meet your needs.

**INDIVIDUAL WELL**  
(Unregulated & untreated.)

Are you on unregulated or private well water? If so, you'll need information to determine your water issues and their solutions.

**DO YOU HAVE ANY REAL OR PERCEIVED ISSUES WITH WATER HARDNESS?**

**YES**  **NO**

**STOP**  
Well water requires complete and independent testing. Call us or visit [www.ewswater.com](http://www.ewswater.com) for more information.

**EWS SERIES**  
Whole Home Water Filtration & Physical Conditioning.

**CWL SERIES**  
Whole Home Water Filtration.

**EWS-1354**  3/4"-1" EWS-1354  
 1 1/4" EWS-1354 HF  
 1 1/2" EWS-1354 1 1/2"  
 OTHER \_\_\_\_\_

The EWS-1354 is the appropriate choice for most applications.

**CWL-1354**  3/4"-1" CWL-1354  
 1 1/4" CWL-1354 HF  
 1 1/2" CWL-1354 1 1/2"  
 OTHER \_\_\_\_\_

The CWL-1354 is the appropriate choice for most applications.

### OPTIONS IN ADDITION TO YOUR EWS OR CWL UNIT

**WATER SOFTENING**  
Specify an EWS RT-1035 if you have a preference for softened water. (Hot side only.)

**SOFTENER DISCLAIMER:**  
Softeners do not filter. They simply exchange naturally-found calcium and magnesium (hardness) minerals for either sodium or potassium chloride. Please note drinking softened water must be avoided, in addition, there can be warranty issues with certain product and finishes, and bans or restrictions due to the environmental impact of the brine discharge. If the "slippery" or "silky" feeling and the perceived benefits are preferred, install to the inlet to the water heater(s) for use on hot water only.

**UPGRADED SINK FILTRATION**  
Used along with our whole home water filtration systems, these sink units may offer additional safeguards. Choose based on your water conditions, preferences or needs.

**LUJ250**  **RU300C1B**  
Drinking Water System. Safeguard for lead, cysts, bacterial, viral and e-coli.  
Reverse Osmosis System. Safeguard for lead, cysts and inorganic materials.

**WATER FILTRATION TO THE WHOLE HOME:**  
Most homes on "city" water simply require the correct Whole Home Water Filtration Appliance installed on the homes' main service line.

Complete installation of any EWS or CWL Whole Home Unit can be as easy for a professional contractor as the installation of a water heater.

Specify by size of main water service line after homes' shut-off valve. Options for smaller or larger homes, usage and/or other conditions. The correct application eliminates the need and expense of a "soft water loop" which would bypass salt-softened water to any drinking water or hose bibs

For any additional details, information, or Q&A, please consult with your Kitchen & Bath sales associate, an EWS mfg. rep, EWS, Inc. customer service or our web site at [www.ewswater.com](http://www.ewswater.com).



## The EWS Series - The Environmental Water System

### Whole Home Water Filtration and Physical Conditioning Appliances

**EWS-1354**

**Model#: EWS-1354                      List Price: \$4,415.00**

Whole Home Water Filtration and Physical Conditioning Appliance.

The EWS-1354 is the most popular system sold for use on 3/4" to 1" water main service lines for continuous flow rates up to 15 gpm.

Replacement Kit Code: POE-11  
or Complete Tank with Kit: POE-11-T

**EWS-1354-HF**

**Model#: EWS-1354-HF                      List Price: \$5,515.00**

Whole Home Water Filtration and Physical Conditioning Appliance.

The EWS-1354-HF has a High Flow 1" MNPT solid brass body valve specified for use on 1 1/4" water main service lines for greater continuous flow rates up to 22 gpm.

Replacement Kit Code: POE-12  
or Complete Tank with Kit: POE-12-T

**EWS-1354-11/2"**

**Model#: EWS-1354-11/2"                      List Price: \$5,915.00**

Whole Home Water Filtration and Physical Conditioning Appliance.

The EWS-1354-11/2" has a 1 1/2" FNPT solid brass body valve specified for use on larger 1 1/2" water main service lines for greater continuous flow rates up to 50 gpm.

Replacement Kit Code: POE-13  
or Complete Tank with Kit: POE-13-T

**EWS-1054**

**Model#: EWS-1054                      List Price: \$3,325.00**

Whole Home Water Filtration and Physical Conditioning Appliance.

The EWS-1054 is the smaller version of the EWS-1354 for use on softer water below 15 grains (or 250 ppm or mg/l of water hardness). For use on 3/4" to 1" water main service lines for continuous flow rates up to 15 gpm.

Replacement Kit Code: POE-10  
or Complete Tank with Kit: POE-10-T

**EWS-1035-LTD**

**Model#: EWS-1035-LTD                      List Price: \$2,925.00**

Whole Home Water Filtration and Physical Conditioning Appliance.

Specialty unit measuring only 44" tall for limited usage and space. For use on softer water below 15 grains (or 250 ppm or mg/l of water hardness), Limit no more than 2 baths, 4 people, and one water heater. For use on 3/4" to 1" water main service lines for continuous flow rates up to 15 gpm.

Replacement Kit Code: POE-9  
or Complete Tank with Kit: POE-9-T

For product tearsheets and complete specifications, see Section 2 in EWS Product Manual. Applicable to most municipally-treated water. Well water needs to be properly and completely tested before the specification of any filtration and treatment system(s). Any EWS System can be combined with EWS softeners (hot-side only) and/or additional EWS sink filtration product based on consumer preference, need, and/or based on the local water conditions. Larger units available. Any questions please inquire with EWS, Inc.



## The CWL Series The Other Standard in Whole Home Water Filtration

**Model#: CWL-1354** **List Price: \$3,434.00**

Whole Home Water Filtration Appliance.

The CWL-1354 is the most popular system sold for use on 3/4" to 1" water main service lines for continuous flow rates up to 15 gpm.

Replacement Kit Code: POE-5  
or Complete Tank with Kit: POE-5-T



**CWL-1354**

**Model#: CWL-1354-HF** **List Price: \$4,134.00**

Whole Home Water Filtration Appliance.

The CWL-1354-HF has a High Flow 1" MNPT solid brass body valve specified for use on 1 1/4" water main service lines for greater continuous flow rates up to 22 gpm.

Replacement Kit Code: POE-5  
or Complete Tank with Kit: POE-5-T



**CWL-1354-HF**

**Model#: CWL-1354-11/2"** **List Price: \$4,534.00**

Whole Home Water Filtration Appliance.

The CWL-1354-11/2" has a 1 1/2" FNPT solid brass body valve specified for use on larger 1 1/2" water main service lines for greater continuous flow rates up to 50 gpm.

Replacement Kit Code: POE-5  
or Complete Tank with Kit: POE-5-T



**CWL-1354-11/2"**

**Model#: CWL-1054** **List Price: \$2,744.00**

Whole Home Water Filtration Appliance.

The CWL-1054 is the smaller version of the CWL-1354 for use on smaller homes and applications of no more than 2 baths, 4 people, and one water heater. For use on 3/4" to 1" water main service lines for continuous flow rates up to 15 gpm.

Replacement Kit Code: POE-4  
or Complete Tank with Kit: POE-4-T



**CWL-1054**

**Model#: CWL-1035-LTD** **List Price: \$2,344.00**

Whole Home Water Filtration Appliance.

Specialty unit measuring only 44" tall for limited usage and space. Limit no more than 2 baths, 4 people, and one water heater. For use on 3/4" to 1" water main service lines for continuous flow rates up to 15 gpm.

Replacement Kit Code: POE-3  
or Complete Tank with Kit: POE-3-T



**CWL-1035-LTD**

For product tearsheets and complete specifications, see Section 2 in EWS Product Manual. Applicable to most municipally-treated water. Well water needs to be properly and completely tested before the specification of any filtration and treatment system(s). Any EWS System can be combined with EWS softeners (hot-side only) and/or additional EWS sink filtration product based on consumer preference, need, and/or based on the local water conditions. Larger units available. Any questions please inquire with EWS, Inc.





## Drinking Water Filtration and UV Disinfection Systems

### Two-Stage Filtration & UV Systems for Common Applications



**FUGAC200**

**Model#: FUGAC200 "Good" List Price: \$240.00**

Improves taste, clarity and odor by removing chlorine and other volatile organic compounds. Meets or complies with NSF Standard 42.

Replacement Filter Codes: 1 & 6



**FUGAC250**

**Model#: FUGAC250 "Better" List Price: \$280.00**

Improves taste, clarity and odor by removing chlorine and other volatile organic compounds. The upgraded filter also safeguards against lead and cysts (giardia and cryptosporidium). Meets or complies with NSF Standard 53.

Replacement Filter Codes: 1 & 7



**UU250**

**Model#: UU250 "Best" List Price: \$585.00**

This unit improves, removes and safeguards like above model FUGAC250. The additional UV module protects against bacterial, viral, E-coli and other microorganisms and is tested 99.9% effective. Meets or complies with NSF Standards 53 and 55.

Replacement Filter & UV Codes: 1, 7 & 16

### Options

**Model#: FMP-60 Pressure Limiting Valve**

**List Price: \$39.95**

**Recommended item  
for all in-line, two & three-stage systems**

Highly recommended to reduce pressure or prevent pressure surges above 60psi. There can be warranty issues with water pressure exceeding 60psi. All Point of Use (sink) Product function best above 40psi but should be limited to 60psi for optimum performance and product longevity.

Simple connection with supplied quick connect fittings to 1/4" tubing • Integral Dual Check Valves • Resists Water Hammer • Stops Backflow • Supplied with fixing clip

**FMP-60**



**Optional dispensing faucet finishes**

**List Price: \$135.00**

All Point of Use (sink) Filtration Systems\* come complete with chrome long-reach dispensers. To Order Optional Finish with Filter System Add Finish Code to Filter System Model # (for example: FUGAC250-SN or UU250-PB)

Add List Price of \$135.00 to the Filter Unit List Price to calculate cost of filter system with optional special finish on dispenser

Finish Options	Optional Finish Code	Calculated List Price
Satin Nickel	Filter Unit Model # add - SN	Add \$135.00 List Price to Filter Unit List Price
Polished Nickel	Filter Unit Model # add - PN	Add \$135.00 List Price to Filter Unit List Price
Polished Brass	Filter Unit Model # add - PB	Add \$135.00 List Price to Filter Unit List Price
Oil Rubbed Bronze	Filter Unit Model # add - ORB	Add \$135.00 List Price to Filter Unit List Price



## Drinking Water Filtration and UV Disinfection Systems

### Three-Stage Filtration & UV Systems for Very Particulate Applications

**Model#: FUGAC300**

**List Price: \$353.00**

Improves taste, clarity and odor by removing chlorine and other volatile organic compounds. Meets or complies with NSF Standard 42.

Replacement Filter Codes: 1, 2 & 6



**FUGAC300**

**Model#: FUGAC350**

**List Price: \$393.00**

Improves taste, clarity and odor by removing chlorine and other volatile organic compounds. The upgraded filter also safeguards against lead and cysts (giardia and cryptosporidium). Meets or complies with NSF Standard 53.

Replacement Filter Codes: 1, 2 & 7



**FUGAC350**

**Model#: UU350**

**List Price: \$698.00**

This unit improves, removes and safeguards like above model FUGAC350. The additional UV module protects against bacterial, viral, E-coli and other microorganisms and is tested 99.9% effective. Meets or complies with NSF Standards 53 and 55.

Replacement Filter & UV Codes: 1, 2, 7 & 16



**UU350**

### In-Line Filtration\* - Limited Application and Usage\*\*



**FUGAC100**

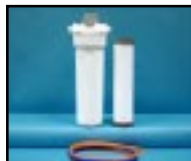
**Model#: FUGAC100**

**List Price: \$130.00**

Improves taste, clarity and odor by removing chlorine and other volatile organic compounds. The upgraded filter also safeguards against lead and cysts (giardia and cryptosporidium). Meets or complies with NSF Standard 53.

\*Does not include dispenser

Replacement Filter Code: 6



**FUGAC150**

**Model#: FUGAC150**

**List Price: \$150.00**

This unit improves, removes and safeguards like above model FUGAC250. The additional UV module protects against bacterial, viral, E-coli and other microorganisms and is tested 99.9% effective. Meets or complies with NSF Standards 53 and 55.

\*Does not include dispenser

Replacement Filter Code: 7

\*\*EWS offers these units to provide a full bed depth of filtration, which offers superior performance compared to the limited capacities of typical in-line "refrigerator type" filters. Single-stage, in-line units are being used, as sales gimmicks, by faucet and sink companies as filtration devices. These units can be used in-line for only limited applications.

EWS or CWL Whole Home Water Filtration Appliances, Drinking Water Systems, and/or Reverse Osmosis Systems offer superior performance for drinking, cooking and many other uses.

For Drinking Filtration product tearsheets and complete specifications, see Section 1 in EWS Product Manual. Applicable to most municipally-treated water. Well water needs to be properly and completely tested before the specification of any filtration and treatment system(s). Sink filtration options should be considered in addition to any Whole Home System based on consumer preference, need, and/or based on the local water conditions. Any questions please inquire with EWS, Inc.







## Reverse Osmosis Systems

### Four-Stage RO Series for Common Well Water Applications

**Model#: RU400T35**

**List Price: \$625.00**

Four stage reverse osmosis system for potable (non-chlorinated) well water contains a GAC postfilter and GAC in-line filter that removes chlorine and other volatile organic compounds to improve taste, clarity and odor. The Thin Film Composite (TFC) membrane removes inorganics, minerals, and total dissolved solids, lead and cysts (giardia and cryptosporidium) and produces up to 35 gallons per day. Meets or complies with NSF Standards 42 and 58.



**RU400T35**

Replacement Filter Codes: 1, 6, 12 & 21

**Model#: RU400T35 w/UV**

**List Price: \$1,055.00**

This unit improves, removes and safeguards like above model RU400T35. The additional UV module protects against bacterial, viral, E-coli and other microorganisms and is tested 99.9% effective. Meets or complies with NSF Standards 42, 58 and 55.



**RU400T35 w/UV**

Replacement Filter & UV Codes: 1, 6, 12, 21 & 16

### Five-Stage RO Series for Difficult Well Water Applications



**RU500T35 Series**

**Model#: RU500T35**

**List Price: \$925.00**

Five stage series for unusually heavy sediment, particulate, extremely high TDS, potable (non-chlorinated) well water. Three stages to protect and filter prior to TFC membrane with post filter for polish. Pump (see below) needed to produce 40psi over membrane. Meets or complies with NSF Standards 42, and 58.

Replacement Filter Codes: 1, 6, 12, 21 & 22

**Model#: RU500T35 w/BP**

**List Price: \$1,395.00**

Correctly specified, the most sold unit in this application. Pump needed to produce 40psi over membrane. Meets or complies with NSF Standards 42, and 58.

Replacement Filter Codes: 1, 6, 12, 21 & 22

**Model#: RU500T35 w/UV**

**List Price: \$1,395.00**

Meets or complies with NSF Standards 42, 58 and 55 with UV option.

Replacement Filter & UV Codes: 1, 6, 12, 21, 22 & 16

**Model#: RU500T35 w/BP w/UV**

**List Price: \$1,895.00**

Pump needed to produce 40psi over membrane. Meets or complies with NSF Standards 42, 58 and 55 with UV option.

Replacement Filter & UV Codes: 1, 6, 12, 21, 22 & 16





## Softener Series

### Ion-Exchange Sodium or Potassium Chloride Softeners

A softener is not a drinking water system. EWS System would be the standard installation at main service line with softener installed on the inlet to the water heater(s) (hot side only). This provides filtered water to the entire home while providing the consumer the slippery or silky feeling and/or the perceived benefits of softened water. Avoid the expense of soft water loops and bypassed lines. Limit the environmental impact of the brine discharge. If a softener needs to be installed at main water supply then a reverse osmosis system would be required at a sink for drinking water.

### Cabinet Style "all-in-one" Unit



**RT-1035**

<b>Model#:</b>	<b>RT-1035</b>	<b>List Price:</b>	<b>\$2,100.00</b>
----------------	----------------	--------------------	-------------------

Low to Moderate household/water usage and/or hot-side only.

Up to 4 people, 3 baths, one water heater and water hardness less than 25 grains. 10x35 tank holds 1.0 cu. ft. resin, 32,000 grain capacity up to 72,000 depending on setting. Digital metered valve and low profile turbine meter meet the highest standards to waste less water, use less salts, create less brine discharge and allow a more even effect of softened water at all times.

Replacement Kit Code: POE-21

### Twin Tank Style - Separate Resin Tank and Brine/Salt Storage tank



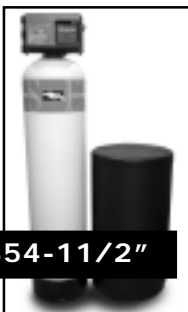
**TT-1054**

<b>Model#:</b>	<b>TT-1054</b>	<b>List Price:</b>	<b>\$2,800.00</b>
----------------	----------------	--------------------	-------------------

Moderate to large household/greater water usage and/or harder water conditions.

10x54 tank holds 1.5 cu. ft. resin, grain capacity of 48,000 up to 135,000 depending on setting. Digital metered valve and low profile turbine meter assembly meet the highest standards to waste less water, use less salts, create less brine discharge and allow a more even effect of softened water at all times.

Replacement Kit Code: POE-22



**TT-1354-11/2"**

<b>Model#:</b>	<b>TT-1354-11/2"</b>	<b>List Price:</b>	<b>\$6,650.00</b>
----------------	----------------------	--------------------	-------------------

Large household or light commercial unit.

For greater water usage on 11/4" or larger service line. 13x54 tank holds 2.5 cu. ft. resin, grain capacity of 60,000 up to 148,000 depending on setting, 11/2" valve for larger main line service for greater flow rates. High efficiency metered valve and meter assembly meet the highest standards to waste less water, use less salts, create less brine discharge and allow a more even effect of softened water at all times.

Replacement Kit Code: POE-23

All units can use either sodium or potassium chloride. EWS softeners are extremely efficient for softeners.

- WARNING: Legal restrictions or outright ban may apply to the use of softeners and the brine discharge.
- WARNING: Warranty issues with other product(s), fixtures and/or finishes may apply to the use of softeners.

For softener product tearsheets and complete specifications, see Section 2 in EWS Product Manual. Applicable to most municipally-treated water. Well water needs to be properly and completely tested before the specification of any filtration and treatment system(s). Any EWS System can be combined with EWS softeners (hot-side only) and/or additional EWS sink filtration product based on consumer preference, need, and/or based on the local water conditions. Larger units available. Any questions please inquire with EWS, Inc.





## In-Line, Point of Entry Pre-Sediment Filtration

Warning: These or other variations of these type of filters are NOT whole home water filtration!

These units have been mistakenly offered to distributors as inexpensive whole home filters. Refer to other point of entry units (such as EWS/CWL Series whole home water filtration) which provide flow rate capabilities for a home application, backwashing, and long periods of time between media (no filter cartridges) and the actual removal of issues depending on water application.

### BB 1" Setup

**Model#:** BB 1" Setup

**List Price:** \$380.00



Pre-Sediment Filter for most general purposes.  
20" Big Blue Housing for use on 3/4" to 1" lines. Includes superior 5-micron, 20" pure polypropylene filter for full bed depth. These units are designed to provide the needed pre-filtration of heavier sediment and/or particulate water prior to a carbon based unit, or pH unit, or after an iron removal unit.

Replacement Filter Code: POE-1

### BB 1 1/2" Setup

**Model#:** BB 1 1/2" Setup

**List Price:** \$440.00



Pre-Sediment Filter for most general purposes.  
20" Big Blue Housing for use on 1 1/2" lines. Includes superior 5-micron, 20" pure polypropylene filter for full bed depth. These units are designed to provide the needed pre-filtration of heavier sediment and/or particulate water prior to a carbon based unit, or pH unit, or after an iron removal unit.

Replacement Filter Code: POE-1

For this product tearsheets and complete specifications, see Section 3 (Well Water) in EWS Product Manual. Applicable to very specific water and needs. Well water needs to be properly and completely tested before the specification of any filtration and treatment system(s). Any system can be combined, or may be required to be combined with, any other point of entry system and/or additional EWS sink filtration product based on consumer preference, need, and/or based on the local water conditions. Larger units available. Any questions please inquire with EWS, Inc.





**pH Balancing**  
Use for Increasing pH from 6.4 or lower



**EWS-1054-PH Series**

Specify for main line size of 3/4" to 1"

<b>List Price:</b>	<b>\$1,350.00</b>	
<b>Model#:</b>	<b>EWS-1054-PH-100</b>	<b>raise pH from 6.0</b>
<b>Model#:</b>	<b>EWS-1054-PH-55</b>	<b>raise pH from 5.1</b>
<b>Model#:</b>	<b>EWS-1054-PH-64</b>	<b>raise pH lower than 5.0</b>

Replacement Kit Code: POE-18



**EWS-1354-PH Series**

Specify for main line size of 1 1/4" to 1 1/2"

<b>List Price:</b>	<b>\$1,850.00</b>	
<b>Model#:</b>	<b>EWS-1354-PH-100</b>	<b>raise pH from 6.0</b>
<b>Model#:</b>	<b>EWS-1354-PH-55</b>	<b>raise pH from 5.1</b>
<b>Model#:</b>	<b>EWS-1354-PH-64</b>	<b>raise pH lower than 5.0</b>

Replacement Kit Code: POE-19

**pH Balancing**  
Use for Decreasing pH from 8.8 or higher

<b>Model#:</b>	<b>TT-1054-PH-DN</b>	<b>List Price:</b>	<b>\$4,478.00</b>
----------------	----------------------	--------------------	-------------------

Ion-exchange softener with special resin to lower pH for use on 3/4" to 1" line.

Replacement Kit Code: POE-30

<b>Model#:</b>	<b>TT-1354-PH-DN</b>	<b>List Price:</b>	<b>\$6,442.00</b>
----------------	----------------------	--------------------	-------------------

Ion-exchange softener with special resin to lower pH for use on 1 1/2" line.

Replacement Kit Code: POE-31



**TT-PH-DN Series**

For this product tearsheets and complete specifications, see Section 3 (Well Water) in EWS Product Manual. Applicable to very specific water and needs. Well water needs to be properly and completely tested before the specification of any filtration and treatment system(s). Any system can be combined, or may be required to be combined with, any other point of entry system and/or additional EWS sink filtration product based on consumer preference, need, and/or based on the local water conditions. Larger units available. Any questions please inquire with EWS, Inc.



## Commercial Point of Entry Filtration, Filtration & Conditioning, Softening

### EWS Series of Commercial Applications

**Model#: EWS-1665-2"** (Filtration & Conditioning)      **List Price: \$10,498.00**

Requiring filtration and physical conditioning of municipally-treated water, the EWS-1665-2 is the most popular system sold for use on 2" water main service lines using a High Capacity 2" FNPT solid brass body valve for continuous flow rates up to 100 gpm.

Units can be installed in parallel for greater flow rates on larger service lines. Larger valve and tank units are available based on application. Call for additional information, quotation, and availability.

Replacement kit code: Call for additional information and quotation.



**EWS-1665-2"**

<b>Model#: EWS-2472-2"</b> (Filtration & Conditioning)	<b>List Price: \$17,998.00</b>
<b>Model#: EWS-3072-2"</b> (Filtration & Conditioning)	<b>List Price: \$24,998.00</b>
<b>Model#: EWS-3072-3"</b> (Filtration & Conditioning)	<b>List Price: \$26,998.00</b>
<b>Model#: EWS-3672-3"</b> (Filtration & Conditioning)	<b>List Price: \$32,998.00</b>

### CWL Series of Commercial Applications - Filtration Only



**CWL-1665-2"**

**Model#: CWL-1665-2"** (Filtration only)      **List Price: \$8,495.00**

Requiring filtration of municipally-treated water, the CWL-1665-2 is the most popular system sold for use on 2" water main service lines using a High Capacity 2" FNPT solid brass body valve for continuous flow rates up to 100 gpm.

Units can be installed in parallel for greater flow rates on larger service lines. Larger valve and tank units are available based on application. Call for additional information, quotation, and availability.

Replacement kit code: Call for additional information and quotation.

### Softener Series of Commercial Applications - Softening Only

**Model#: Custom Designed and Quoted based on specification**

Requiring softening of water, single tank or alternating tanks are specified based on the need, water conditions, usage, flow rates, line size, hours of operation and other factors. 1 1/2", 2", 3" valves and larger are available based on application. Call for additional information, quotation, and availability.

Replacement kit code: Call for additional information and quotation.



**WARNING:** Legal restrictions or outright ban may apply to the use of softeners and the brine discharge.  
**WARNING:** Warranty issues with other product(s), fixtures and/or finishes may apply to the use of softeners.

For this product tearsheets and complete specifications, see Section 3 in EWS Product Manual. Applicable to very specific water and needs. Well water needs to be properly and completely tested before the specification of any filtration and treatment system(s). Any system can be combined, or may be required to be combined with, any other point of entry system and/or additional EWS sink filtration product based on consumer preference, need, and/or based on the local water conditions. Larger units available. Any questions please inquire with EWS, Inc.



### Commercial Reverse Osmosis



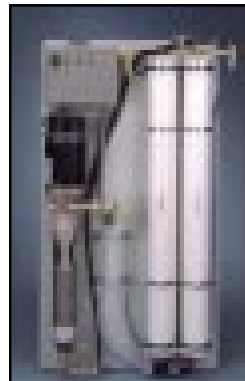
**COM150**

#### Compact Commercial Reverse Osmosis 150 to 800 gallons per day

<b>Model#:</b>	<b>COM150</b>	<b>List Price:</b>	<b>\$3,568.00</b>
----------------	---------------	--------------------	-------------------

Requiring reverse osmosis filtration of water, the COM150 is the most popular light commercial, heavy residential, and/or specific usage system sold, producing up to 150 gallons per day or up to 6.25 gallons per hour.

<b>Model#:</b>	<b>COM250</b>	<b>List Price:</b>	<b>\$3,948.00</b>
<b>Model#:</b>	<b>COM450</b>	<b>List Price:</b>	<b>\$4,596.00</b>
<b>Model#:</b>	<b>COM800</b>	<b>List Price:</b>	<b>\$5,588.00</b>



**WM450**

#### Wall Mount Commercial Reverse Osmosis 450 to 5,400 gallons per day

<b>Model#:</b>	<b>WM450</b>	<b>List Price:</b>	<b>\$6,224.00</b>
<b>Model#:</b>	<b>WM800</b>	<b>List Price:</b>	<b>\$7,248.00</b>
<b>Model#:</b>	<b>WM140</b>	<b>List Price:</b>	<b>\$10,332.00</b>
<b>Model#:</b>	<b>WM240</b>	<b>List Price:</b>	<b>\$13,468.00</b>
<b>Model#:</b>	<b>WM340</b>	<b>List Price:</b>	<b>\$16,132.00</b>



**FMV-1**

#### Frame Mount/Vertical Commercial Reverse Osmosis 1,800 to 10,800 gallons per day

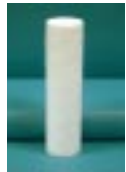
<b>Model#:</b>	<b>FMV-1</b>	<b>List Price:</b>	<b>\$10,776.00</b>
<b>Model#:</b>	<b>FMV-2</b>	<b>List Price:</b>	<b>\$13,668.00</b>
<b>Model#:</b>	<b>FMV-3</b>	<b>List Price:</b>	<b>\$16,112.00</b>
<b>Model#:</b>	<b>FMV-4</b>	<b>List Price:</b>	<b>\$20,000.00</b>
<b>Model#:</b>	<b>FMV-5</b>	<b>List Price:</b>	<b>\$22,776.00</b>
<b>Model#:</b>	<b>FMV-6</b>	<b>List Price:</b>	<b>\$25,556.00</b>

Call for additional information, quotation, and availability. Other options available and quoted upon request for all commercial/industrial reverse osmosis systems including, but not limited to, feedwater pre-treatment equipment and production water post-treatment. Please request a specification sheet for technical information, flow rates, system schematics and options offered for those particular units. Well water needs to be properly and completely tested before the specification of any filtration and treatment system(s). Any system can be combined, or may be required to be combined with, any other point of entry system and/or additional product based on consumer preference, need, and/or based on the local water conditions. Any questions please inquire with EWS, Inc.



## Replacements of Filter Cartridges, Membranes, UV Lamp

Refer to the Filter Code and Order by Model #



<b>Filter Code No: 1</b>	<b>Model #: 93023</b>	<b>List Price: \$17.00</b>
--------------------------	-----------------------	----------------------------

Pre-Sediment Filter (5-micron)  
In Use With: All Units  
Replace: up to a year\*



<b>Filter Code No: 2</b>	<b>Model #: WB-20-W</b>	<b>List Price: \$22.00</b>
--------------------------	-------------------------	----------------------------

Pre-Sediment Filter (20-micron)  
In Use With: FUGAC300, FUGAC350, UU350  
Replace: up to a year\*



<b>Filter Code No: 6</b>	<b>Model #: UDF10HP</b>	<b>List Price: \$29.00</b>
--------------------------	-------------------------	----------------------------

Granular Activated Carbon Postfilter  
In Use With: FUGAC100, FUGAC200, FUGAC300, and all reverse osmosis units  
Replace: up to a year\*



<b>Filter Code No: 7</b>	<b>Model #: PB-1</b>	<b>List Price: \$68.00</b>
--------------------------	----------------------	----------------------------

Carbon Block 1-Micron Postfilter  
In Use With: FUGAC150, FUGAC250, UU250, FUGAC350, UU350  
Replace: up to a year\*



<b>Filter Code No: 11</b>	<b>Model #: CTA-18</b>	<b>List Price: \$102.00</b>
---------------------------	------------------------	-----------------------------

CTA-RO Membranes  
In Use With: RU300C18, RU300C18w/UV  
Replace: up to 18 months\*



<b>Filter Code No: 12</b>	<b>Model #: TFC-35</b>	<b>List Price: \$139.00</b>
---------------------------	------------------------	-----------------------------

TFC-RO Membranes  
In Use With: RU400T35, RU400T35w/UV, and all RU500T35 series  
Replace: up to 18 months\*



<b>Filter Code No: 16</b>	<b>Model #: UST-200 RL (lamp only)</b>	<b>List Price: \$90.00</b>
---------------------------	--	----------------------------

UV Lamp - Bacteria-Kill Units  
In Use With: UU250, UU350, and any reverse osmosis with UV upgrade  
Replace: Annually, or as needed\*, not to exceed a one year



<b>Filter Code No: 21</b>	<b>Model #: IL210C</b>	<b>List Price: \$30.00</b>
---------------------------	------------------------	----------------------------

2" x 10" In-Line Carbon Postfilter  
In Use With: RU400T35, RU400T35w/UV, and all RU500T35 series  
Replace: up to a year\*



<b>Filter Code No: 22</b>	<b>Model #: OCB</b>	<b>List Price: \$36.00</b>
---------------------------	---------------------	----------------------------

Granular Activated Carbon Pre-Filter  
In Use With: all RU500T35 series  
Replace: up to a year\*

\* Replacement is based on local water conditions and usage. Replace as needed and/or not beyond recommended time limit. For all replacement specifications, see Sections 1, 2 or 3 in EWS Product Manual. Applicable to most municipally-treated water. Well water needs to be properly and completely tested before the specification of any filtration and treatment system(s). Sink filtration options should be considered in addition to any Whole Home System based on consumer preference, need, and/or based on the local water conditions. Any questions please inquire with EWS, Inc.



## Replacement Media Kits for All Point of Entry Units

Refer to the Replacement Code and Order by Model #

**In-Line, Point of Entry Pre-Sediment Cartridge:** Replace: Up to 6 months or as needed\*

Kit Code	Model #	For Use in All BB Setups	List Price
POE-1	BB-081	20" 5 micron pre-sediment cartridge	\$ 65.00

**GAC Replacement Media Kits :** Replace: Up to 10 years or as needed\*

Kit Code	Model #	CWL: For Use in All CWL Series	List Price
POE-3	M/GAC1035	for CWL-1035-LTD	\$ 290.00
POE-4	M/GAC1054	for CWL-1054	\$ 320.00
POE-5	M/GAC1354	for all CWL-1354 Series	\$ 530.00
Complete Tank	Add: T- to any Model #	Complete Assembled Tank with Media Kit	Add: \$ 400.00 to List Price

All Pre-2000 EWS-1354-1" and EWS-1354-HF units REQUIRE new tanks to accommodate new ICN Riser Manifold

**Complete Tank with GAC & ICN Replacement:** Replace: Up to 10 years or as needed\*

Kit Code	Model #	EWS: For Use in All EWS Series	List Price
POE-9-T	T-ICN/GAC1035	for EWS-1035-LTD <i>Highly Recommended</i>	\$ 1,050.00
POE-10-T	T-ICN/GAC1054	for EWS-1054 <i>Highly Recommended</i>	\$ 1,100.00
POE-11-T	T-ICN/GAC1354-1	for EWS-1354-1" <i>Highly Recommended</i>	\$ 1,850.00
POE-12-T	T-ICN/GAC1354-HF	for EWS-1354-HF <i>Highly Recommended</i>	\$ 1,850.00
POE-13-T	T-ICN/GAC1354-11/2	for EWS-1354-11/2" <i>Highly Recommended</i>	\$ 1,890.00

Kit is a fully assembled tank and shipped complete. Any additional cost is offset by reducing labor costs and providing an extremely easy kit replacement. This complete kit with tank is required on all Pre-2000 EWS-1354-1 (units with red handled bypasses) and EWS-1354-HF units (units without grey adaptor nut between valve and tank). Both units have old tank configuration of 2 1/2" opening which will not accommodate new ICN riser manifold.

**GAC & ICN Replacement Kits :** Replace: Up to 10 years or as needed\*

Kit Code	Model #	EWS: For Use in 2000 to Present EWS Series	List Price
POE-9	ICN/GAC1035	for EWS-1035-LTD	\$ 700.00
POE-10	ICN/GAC1054	for EWS-1054	\$ 750.00
POE-11	ICN/GAC1354-1	for EWS-1354-1"	\$ 1,350.00
POE-12	ICN/GAC1354-HF	for EWS-1354-HF	\$ 1,350.00
POE-13	ICN/GAC1354-11/2	for EWS-1354-11/2"	\$ 1,390.00

**High Oxidation Media Replacement Kits:** Replace: as needed\*

Kit Code	Model #	For Use in All Iron Removal Units	List Price
POE-16	M/PYRO1054	for EWS-1054-P	\$ 825.00
POE-17	M/PYRO1354	for EWS-1354-11/2"-P	\$ 1,325.00

**Media Replacement Kits:** Replace: as needed\*

Kit Code	Model #	For Use in All pH Units	List Price
POE-18	M/PH-1054-***	for a 1054 tank, ***specify by -100, -55, -64	\$ 825.00
POE-19	M/PH-1354-***	for a 1354 tank, ***specify by -100, -55, -64	\$ 1,125.00
POE-30	pHRESIN-1054	for pH decreasing TT-1054-PH-DN unit	\$ 650.00
POE-31	pHRESIN-1354	for pH decreasing TT-1354-PH-DN unit	\$ 1,050.00

**Resin Replacement Kits:** Replace: as needed\*

Kit Code	Model #	For Use in All Softeners	List Price
POE-20	RESIN3/4	for RT935 (discontinued in 2002)	\$ 390.00
POE-21	RESIN1.0	for RT1035	\$ 490.00
POE-22	RESIN1.5	for TT1054	\$ 590.00
POE-23	RESIN2.5	for TT1354	\$ 790.00

For all commercial media kit or complete tank replacements, resins, filters and/or membranes, call for additional information, quotation, and availability





**Current Shipping & Handling Schedule - 2008**

NO Stocking Requirements NO Minimum Orders

Charges referenced in this schedule are for shipments within the 48 Continental United States. For all shipments to Alaska, Hawaii, and International, please call for additional information, availability and quotation. For all commercial shipments, please call for additional information, availability and quotation.



**Common Carrier UPS Ground Schedule**

Product shipped via UPS Ground include the following;

Drinking Water Systems (FU, UU), Reverse Osmosis Systems (RU), BB Units, and/or Parts limited to a box size of 25"x25"x25" and a maximum of 50 lbs..

**Small Box(es): A small box for shipping purposes is considered the following;**  
Any single Model # with FU or UU prefix, or up to 6 Filter Replacements &/or Dispensers, or up to 3 BB-081 cartridges, or Parts: any parts that fit in a box up to 15"x15"x15" and up to 20 lbs

1 unit \$17.50 -----	2 units \$33.00 (\$16.50/unit)	3 units \$45.00 (\$15.00/unit)	4 units \$52.00 (\$13.00/unit)	5 units or more min \$55.00 & up (@ \$11.00/unit)
----------------------------	--------------------------------------	--------------------------------------	--------------------------------------	---

**Large Box(es): A large box for shipping purposes is considered the following;**  
Any single Model # with RU or BB prefix, or parts that fit in a box up to 25"x25"x25" and up to 50 lbs

1 unit \$37.00 -----	2 units \$70.00 (\$35.00/unit)	3 units \$96.00 (\$32.00/unit)	4 units \$110.00 (\$27.50/unit)	5 units or more min \$125.00 & up (@ \$25.00/unit)
----------------------------	--------------------------------------	--------------------------------------	---------------------------------------	--

For larger quantities:

EWS may ship at a savings via Truck or Motor Freight for multiple small and/or large boxed items.

Savings for ordering a combination of product: Up to 3 small and/or large boxed items may ride with each Point of Entry Unit shipped at no additional cost found on the Truck or Motor Freight Schedule.

On any shipment (\*\*pre-paid or not) the limit is 3 small and/or large boxed items with each Point of Entry Unit shipped. Any overage will incur the small box unit charge for each box exceeding the limit.

**Drop Shipment by Common Carrier: Add \$7.00 to any order for any drop shipment.**

A drop shipment is any order not shipped to a listed distributor's receiving location. Drop shipments require an accurate address and contact phone information. Someone must be present to receive and sign for the shipment. Any additional cost incurred for delays, storage, redirection, and/or additional attempts will be the responsibility of the originating purchase order issuer.

**Any purchase order can be shipped on distributor account:**

Please provide carrier name and account number and

EWS will ship via your account without any additional charges.

Any overnight, express, 2nd day or any method other than ground,

must ship on distributor account or be quoted before purchase order can be processed.

Any quicker shipment method does not guarantee an expedited order (see Policy below)

Policy: All orders are checked for accuracy of pricing, product, and legibility, then processed, set-up in our factory facility, and shipped from our factory facility on a "first come, first served" basis regardless of order size, without prejudice or preference to any account. Please allow up to 5-7 business days to ship most orders (95% since 1987) and then add the approximate travel time to the receiving destination.

**All EWS, Inc. shipments are shipped in accordance with EWS, Inc. General Terms and Standard Conditions of Sale**

Shipments and Freight Claims: "Delivery to carrier shall constitute delivery to customer. EWS's responsibility terminates upon delivery in good order to carrier. All goods are shipped at the customer's risk. Any claim for loss or damage in transit should be made promptly by customer against carrier. These and other shipment terms are written clearly on the reverse side of all packing slips that accompany all accepted shipments".





Current Shipping & Handling Schedule - 2008

NO Stocking Requirements NO Minimum Orders

Charges referenced in this schedule are for shipments within the 48 Continental United States. For all shipments to Alaska, Hawaii, and International, please call for additional information, availability and quotation. For all commercial shipments, please call for additional information, availability and quotation.



Truck or Motor Freight Schedule

Product shipped via truck/motor freight include the following: EWS/CWL Series, RT & TT Softeners, EWS-P Series, ph Balancing Series, All Media Kits.

\*\*Pre-Paid Shipment is any combination of 5 or more of any of the items listed above. This schedule and pre-paid shipments do not include items listed as commercial product.

All 48 States in the Continental U.S. (with the exception of AZ, CA., and NV.)

Table with 5 columns: 1 unit, 2 units, 3 units, 4 units, 5 or more units. Prices range from \$185.00 to \$350.00. Per unit prices are shown in parentheses.

AZ., NV., CA. (north of the San Luis Obispo and the Kern County line)

Table with 5 columns: 1 unit, 2 units, 3 units, 4 units, 5 or more units. Prices range from \$145.00 to \$280.00. Per unit prices are shown in parentheses.

California (south of the San Luis Obispo, Kern and San Bernardino County lines)

Table with 5 columns: 1 unit, 2 units, 3 units, 4 units, 5 or more units. Prices range from \$80.00 to \$220.00. Per unit prices are shown in parentheses.

Drop Shipment by Truck/Motor Freight: Add \$80 to any order (pre-paid shipment included)

A drop shipment is any order not shipped to a listed distributor's receiving location. Drop shipments require an accurate address and contact phone information. Someone must be present to receive and sign for the shipment. Any additional cost incurred for delays, storage, redirection, and/or additional attempts will be the responsibility of the originating purchase order issuer.

Any purchase order can be shipped on distributor account:

Please provide carrier name, contact phone number and account number and EWS will ship via truck motor freight on your account without any additional charges.

All shipments via truck motor freight.

Shipment leaves EWS Southern California facility on a pallet, strapped and plastic wrapped.

Policy: All orders are checked for accuracy of pricing, product, and legibility, then processed, set-up in our factory facility, and shipped from our factory facility on a "first come, first served" basis regardless of order size, without prejudice or preference to any account. Please allow up to 5-7 business days to ship most orders (95% since 1987) and then add the approximate travel time to the receiving destination.

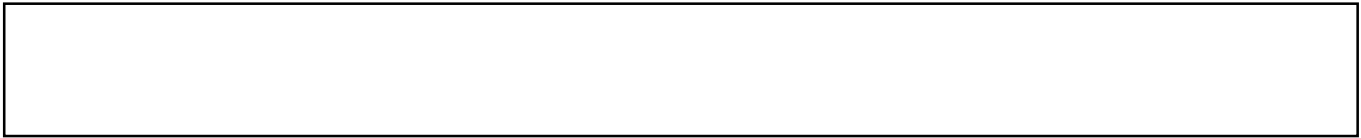
All EWS, Inc. shipments are shipped in accordance with EWS, Inc. General Terms and Standard Conditions of Sale

Shipments and Freight Claims: "Delivery to carrier shall constitute delivery to customer. EWS's responsibility terminates upon delivery in good order to carrier. All goods are shipped at the customer's risk. Any claim for loss or damage in transit should be made promptly by customer against carrier. These and other shipment terms are written clearly on the reverse side of all packing slips that accompany all accepted shipments".





The complete EWS, Inc./Environmental Water System Product Line available through:



Available through Authorized Building Wholesale Supply Locations, Kitchen & Bath Showrooms and Appliance Dealers, and their Building and Plumbing Contractors throughout the United States.  
Available on the Internet through Authorized Retail Web Distributors and Business-to-Business E-Commerce Distributors.



### Contact Information:



Since 1987

## **EWS, INC. Environmental Water Systems**

9101 W. Sahara Avenue #105-J8, Las Vegas, Nevada 89117

O: 702-256-8182 Monday - Friday; 8:30am - 4:30pm, Pacific Standard Time  
F: 702-256-3744  
E: [customerservice@ewswater.com](mailto:customerservice@ewswater.com)  
W: [www.ewswater.com](http://www.ewswater.com)

ALL FILTRATION PRODUCT MADE  AND ASSEMBLED IN THE USA

**Effective:  
Calendar Year 2008**

